



COACHES



MICHAEL SEALY

HEAD COACH

FOURTH YEAR

RECORD: 75-23

UCLA, 1993



Michael Sealy begins his fourth season as the head coach of the UCLA women's volleyball team in 2013. Sealy has a three-year record of 75-23 for a .765 winning percentage and guided the Bruins to a National Championship in 2011.

Last season, the Bruins posted a 23-8 record, finishing in a tie for fourth in the Pac-12 with a 14-6 mark and advancing to the Second Round of the NCAA Tournament. Two Bruins, Rachael Kidder and Tabi Love, were named All-America, All-Region and All-Pac-12, while Zoë Nightingale earned All-Pac-12 Honorable Mention accolades.

For the 14th-straight season, the Bruins surpassed the 20-win mark in 2012. UCLA was second in the nation in kills per set (14.76), third in assists per set (13.84) and fifth in hitting percentage (.295), which was also the second-best, single-season total in program history. The Bruins led all Pac-12 teams in hitting and were second in kps and aps.

In 2011, Sealy led the Bruins to the program's fourth NCAA title and seventh National Championship. The Bruins posted a 30-6 record and defeated four-time defending champion Penn State, #1-overall seed Texas, Florida State and Illinois en route to the championship.

Sealy was named the AVCA National Coach of the Year. The Bruins finished second in the Pac-12 with a 17-5 record. Six players were honored on the All-Conference teams, while Kidder, the Most Outstanding Player of the NCAA Tournament, was a First Team All-America and All-Region selection.

UCLA finished fifth in the nation in assists per set (13.71) and eighth in kills per set (14.52). Among Pac-12 teams, the Bruins ranked first in aps, second in kps and opponent hitting percentage (.160) and third in digs per set (15.95).

In his first campaign, Sealy guided the Bruins to a 22-9 record, a fourth-place finish in the Pacific-10 Conference (11-7) and a Second-Round appearance in the NCAA Tournament. Three Bruins were named to the All-Pac-10 team in 2010, Dicey McGraw (First Team), Lainey Gera (Honorable Mention) and Kidder (Honorable Mention), while McGraw also earned AVCA All-Pacific Region Honorable Mention accolades.

UCLA finished in the top half of the Pac-10 in digs (2nd, 15.41), assists (4th, 13.46), kills (4th, 14.26) and aces (5th, 1.20) per set along with opponent hitting percentage (4th, .187).

Sealy spent part of the summer of 2012 in London at the Olympic Games, serving as a scout coach for the U.S. men's volleyball team.

UCLA Athletic Director Dan Guerrero announced on Feb. 10, 2010 that Sealy was named head coach of the Bruin women's volleyball program. Sealy returned to his alma mater after spending four seasons (2006-09) as an associate head coach at the University of Hawai'i. He was a three-time All-American and an assistant coach for four years with the UCLA men's volleyball team and was an assistant with the Bruin women's volleyball program in 2005.

"We are excited to welcome back Michael Sealy to lead the women's volleyball program," Guerrero said. "Michael clearly possesses the necessary credentials to allow UCLA to compete at the highest level. He is well-respected in the volleyball community and has an enthusiastic and passionate approach towards the game. Furthermore, as a former Bruin player and coach, he understands the tradition of excellence that has defined the volleyball programs at UCLA and I am confident that he will continue that legacy of success with ambition and integrity."

"I am very excited and inspired to be back at UCLA," said Sealy. "I feel very fortunate and humbled to take over a program with such a storied history. I would like to thank Dan Guerrero and (Senior Associate Athletic Director/Senior Women's Administrator) Petrina Long for giving me this opportunity and for supporting my vision for the future of the program."

Sealy helped Hawai'i to a berth in the National Semifinals in 2009. The Rainbow Wahine recorded their second-straight, 30-win season last year, going 32-3 overall. They also posted a 16-0 mark in conference play to earn their 14th-straight Western Athletic Conference title and went on to claim their 10th-consecutive WAC Tournament championship. Sealy's record during his tenure at Hawai'i was 119-19 (.862 winning percentage).

Prior to his stint at Hawai'i, Sealy coached for four seasons at UCLA, where he was an assistant on the men's side from 2003-2006 and an assistant for the women's volleyball team in 2005. In his lone season on the women's side, the Bruins posted a 20-11 record and advanced to the Regional Semifinals. With the UCLA men, Sealy was 91-38 (.705) during his four campaigns, helping the Bruins to an NCAA Championship in 2006 and an NCAA Runner-Up finish in 2005. Sealy was also a volunteer assistant with the Cal State Northridge men's volleyball team in 2000 before working in the same capacity with the UCLA men in 2001.

One of the top setters in UCLA history, Sealy was a four-year letterwinner with the Bruins from 1990-93 and ranks fourth in Bruin annals in assists (4,749). In his senior season, Sealy and the Bruins won the program's 14th National Championship, going 24-3. The team captain was named the co-Most Outstanding Player of the 1993 NCAA Tournament and also earned ASICS/Volleyball Monthly Player of the Year and AVCA All-American first-team honors. In addition, Sealy was named an All-American in 1991 (first-team) and 1992 (third-team), as well as All-Conference three times. The Bruins won three conference titles during Sealy's playing days, going 80-24 (.769) during his four years.

Following his playing career in Westwood, Sealy went on to play professionally in Switzerland, Belgium, Holland and Puerto Rico. He also played with the U.S. National Team in 1994 and 1997.

Sealy graduated from UCLA in 1993 with a degree in physiological science.



MICHAEL SEALY'S HEAD COACHING RECORD

YEAR	RECORD	PAC-10/12	POSTSEASON
2010	22-9 (.710)	11-7 (4th)	1-1 (Second Round)
2011	30-6 (.833)	17-5 (2nd)	6-0 (National Champions)
2012	23-8 (.742)	14-6 (T-4th)	1-1 (Second Round)
TOTALS	75-23 (.765)	42-18 (.700)	8-2 (.800)



JOY MCKENZIE-FUERBRINGER

ASSISTANT COACH

FOURTH YEAR

LONG BEACH STATE, 1994



Joy McKenzie-Fuerbringer begins her fourth season as an assistant coach for the UCLA women's volleyball team in 2013.

In her third year with the Bruins last season, UCLA went 23-8 and finished in a tie for fourth in the Pac-12 at 14-6. The Bruins were second in the nation in kills per set (14.76), third in assists per set (13.84) and fifth in hitting percentage (.295), which was also the second-best, single-season total in program history. The Bruins paced all Pac-12 teams in hitting and were second in kps and aps.

In 2011, McKenzie-Fuerbringer helped guide the Bruins to a National Championship. The Bruins went 30-6 and finished second in the Pac-12 standings with a 17-5 mark. UCLA finished fifth in the nation in assists per set (13.71) and eighth in kills per set (14.52). Among Pac-12 teams, the Bruins ranked first in aps, second in kps and opponent hitting percentage (.160) and third in digs per set (15.95).

In her first year with the program, the Bruins went 22-9 and finished in the top half of the Pacific-10 Conference in digs (2nd), assists (4th), kills (4th) and aces per set (5th) along with opponent hitting percentage (4th).

McKenzie-Fuerbringer, an All-American setter at Long Beach State and successful club coach, was named to head coach Michael Sealy's staff on March 11, 2010.

"Joy is a well-respected player and coach and her reputation adds to the tradition and legacy we have here and only makes us stronger and better," Sealy said.

McKenzie-Fuerbringer brings 17 years of experience as the head coach, head trainer and club director of Mizuno Volleyball Club. The club director since the program's inception in 1994, her teams have won 14 USA Volleyball Junior National Championship medals. In 2002, she was an assistant for the Youth National Team, which won the gold medal for the U.S. in the NORCECA Youth Girls' Volleyball Championship. She has also trained over 100 high school and college All-Americans and two Gatorade Players of the Year since 2005. McKenzie-Fuerbringer has trained youth players at the highest levels of beach volleyball in the United States and the FIVB World Championships for the last decade. In February 2010, she accepted a position to sit on the USA Volleyball Board of Directors as its elite beach development representative.

McKenzie-Fuerbringer coached for two seasons at Long Beach State (1999-2000), helping the 49ers to a National Semifinal appearance in '99. She also coached for two seasons at Golden West College (1996-97), as Golden West claimed a pair of state championships, as well as for one season at both Long Beach Wilson and Los Alamitos High Schools.

As a player, McKenzie-Fuerbringer helped Long Beach State win a National Championship in 1993. The team captain was a second-team All-American, first-team All-Region and first-team All-Big West honoree during her senior campaign, leading the team in assists. The 49ers also reached the title game in 1991 and the National Semifinals in 1992. After her days at Long Beach, she competed for two seasons on the Bud Light 4-Person Tour and was named Rookie of the Year in 1995 and the Best Defensive Player and Best Setter of the Year in 1996. McKenzie-Fuerbringer played an additional season on the AVP Tour, as well as competing professionally in indoor leagues and coaching in Holland and Spain from 1999-2002.

McKenzie-Fuerbringer graduated from Long Beach State in 1994 with a bachelor's in liberal studies and sociology. Her brother David played in the 2012 London Olympic Games with the U.S. Volleyball Team. She resides in Hermosa Beach with her husband Matt, daughter Charlie and son Mateo.



STEIN METZGER

ASSISTANT COACH

SECOND YEAR

UCLA, 1996

Stein Metzger begins his second season with the UCLA women's volleyball staff in 2013 after serving as a volunteer assistant last year. Metzger also just completed his first campaign as UCLA's head sand volleyball coach, which had its inaugural season last spring.

During the 2012 indoor campaign, the Bruins sported a 23-8 record and tied for fourth in the Pac-12 (14-6). UCLA was second in the nation in kills per set (14.76), third in assists per set (13.84) and fifth in hitting percentage (.295), which was also the second-best, single-season total in program history. The Bruins paced all Pac-12 teams in hitting and were second in kps and aps.

Last spring, Metzger started a sand volleyball team just two months after the sport was added to UCLA's athletic program. Under his tutelage, a pair of doubles teams, Meg Norton and Kelly Reeves and Zoë Nightingale and Becca Strehlow, reached the AVCA National Championships, while Reeves was named the program's first All-American.

Metzger returned to his alma mater, having played on the Bruin men's team from 1993-96 and winning three National Championships. Metzger, who was a teammate of current head coach Michael Sealy on the '93 title-winning squad, is second all-time in UCLA history in assists (5,158) and fifth in aces (110).

He went on to win two more National Championships in 1995 and '96, getting named to the NCAA All-Tournament Team both times. Metzger earned AVCA First-Team All-America and ASICS/Volleyball Magazine All-America honors both seasons, while earning AVCA Co-Player of the Year accolades as a team captain during his senior campaign. He was also named to the all-conference team three times, including First Team in '96.

Following his days in Westwood, Metzger competed professionally on the AVP Tour, winning 16 times with partners Kevin Wong (two times), Jake Gibb (four), Mike Lambert (nine) and Mark Williams (one). Metzger was twice a part of the AVP Team of the Year with Gibb ('05) and Lambert ('06), ranking as the Tour's top player both seasons. He earned the Crocs Cup title in 2006.

In 2004, Metzger earned a spot on the U.S. Olympic Beach Volleyball team, finishing in fifth with partner Dax Holdren. A year prior, the duo won the silver medal at the 2003 Beach Volleyball World Championships in Rio de Janeiro, Brazil. Metzger also has two international titles to his credit with Wong in 2001 and '02, as well as a Bronze medal at the '01 Goodwill Games.

A 1996 graduate of UCLA with a degree in environmental studies, Metzger was inducted into the UCLA Athletics Hall of Fame in 2009. Metzger and his wife, Emily, live in Redondo Beach with their daughter, Quinn (3).





KAITLIN NIELSEN
VOLUNTEER ASSISTANT COACH
FIRST YEAR
UCLA, 2009

Kaitlin Nielsen begins her first season on the UCLA women's volleyball coaching staff in 2013 as a volunteer assistant after serving as an assistant coach with the Bruin sand volleyball team in Spring 2013 during the program's inaugural year.

Nielsen, along with head sand coach Stein Metzger, started the sand squad just two months after the sport was added to UCLA's athletic program. Under their guidance, a pair of doubles teams, Meg Norton and Kelly Reeves and Zoë Nightingale and Becca Strehlow, reached the AVCA National Championships, while Reeves was named the program's first All-American.

Nielsen (née Sather) returned to her alma mater after a standout career with the Bruins from 2005 to 2009. She appeared in 132 matches and 448 sets, producing 1,501 kills, 1,153 digs, 99 service aces and 279 blocks. Sather stands 11th on UCLA's all-time kills list, eighth in kills per set (3.35), third in total attacks (4,287), ninth in digs and tied for ninth in sets played. She is only the 12th Bruin to ever record at least 1,000 kills and 1,000 digs for a career.

As a freshman in 2005, Sather led the Bruins in kps (3.81), total attacks (1,214), aces (38) and points (478.5), receiving All-Pac-10 Freshman Team honors. In 2006, Sather helped the Bruins to an appearance in the NCAA National Semifinals, recording double figures in kills in all five Tournament matches. She played in all 37 contests and finished third on the team with 2.95 kps.

In 2007, Sather was named All-Pac-10 Honorable Mention after pacing the Bruins with 3.76 kps and sporting 28 aces, which was third on the squad. She helped UCLA to within one match of another National Semifinal appearance and would earn All-Regional Team honors.

After sitting out the 2008 campaign due to shoulder surgery, as well as a brief stint as a high jumper on the UCLA track and field team in the Spring of 2009, Sather was named an AVCA Honorable Mention All-American in her senior season after leading the Bruins in attacks (1,001) and placing second with 2.86 kps and 3.05 digs per set. She also earned AVCA Honorable Mention All-Region and All-Pac-10 Conference accolades to close her career.

One of only a dozen Bruins to earn three Pac-10 All-Academic selections, including First Team in 2007 and 2009, as well as ESPN The Magazine All-District Third Team in '07, Sather graduated from UCLA with a degree in history and minor in education in 2009.

Following her time in Westwood, Nielsen began her professional career, which continues today on the Association of Volleyball Professionals (AVP) Tour. Between 2010 and this summer, she has appeared in 22 events on the AVP, Jose Cuervo Pro Beach Volleyball Series, National Volleyball League, USA Volleyball IDQ and Wide Open Beach Volleyball. Nielsen has also played in two FIVB and three NORCECA events. She finished fourth at the FIVB Anapa Open in July with partner Heather Hughes.

Nielsen is married to former Cal State Northridge and U.S. National Team member, Nils, and lives in Hermosa Beach.



CAYLEY THURLBY
DIRECTOR OF OPERATIONS
THIRD YEAR
HAWAII, 2007

Cayley Thurlby begins her third season as the Director of Volleyball Operations for the UCLA women's volleyball program in 2013.

Thurlby played collegiately at the University of Hawai'i from 2002-06, as the Rainbow Wahine advanced to a pair of Final Fours in '02 and '03. After redshirting in 2002, Thurlby played in 118 matches in her four years, totaling 421 assists (1.89 per set), 16 aces and 207 digs (0.93 per set). She averaged over a dig a set in each of her last two seasons (1.24 in 2005 and 1.19 in 2006) when she was named a team co-captain, seeing action at setter, right-side hitter and defensive specialist during her four years.

Thurlby graduated from Hawai'i in 2007 with a bachelor's degree in broadcast journalism and business marketing and was a three-time All-WAC Academic selection.

After her days at Hawai'i, Thurlby played professionally in Cordoba, Spain with Cajasur in 2007, also playing in Argentina that year. In 2008, she played in six events on the AVP Tour with partner Renee Bizzi, advancing from the qualifier at the Manhattan Beach Open.

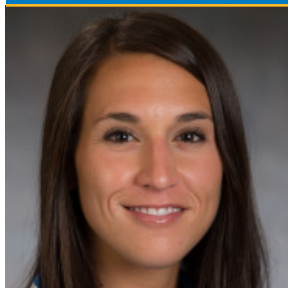
In 2009, she played with three different partners over seven events, making the main draw again in Manhattan Beach. She also made her international debut as a member of the USA U-26 Beach National Team and competed on the FIVB World Tour in Aland, Finland.

In 2010, she finished fourth at the NORCECA tour events in Boca Chica, Dominican Republic and Puerto Vallarta, Mexico. On the AVP Tour that season, she competed on the Young Guns Tour, finishing first in Milwaukee and second in Long Beach, N.Y. and Hermosa Beach. Thurlby also finished fifth in the Monte Carlo Invitational in Monaco and ninth in the Manhattan Beach Open. She ended the 2010 season as the 64th-ranked player on the AVP Tour.

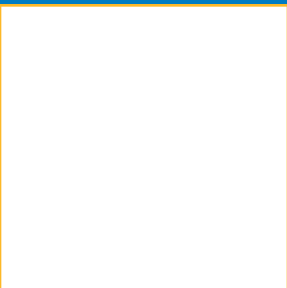
In 2011, she finished 13th at both the Manhattan and Hermosa Jose Cuervo tour stops with partner Morgan Beck.

The Naperville, Ill. native began coaching club in 2007 with Sports Performance Volleyball in Aurora, Ill., coaching a 16's team and the Sports Performance Setting Academy along with other Summer camps. She was also the assistant varsity volleyball coach at Naperville Central High School that year, helping them to an ILHSA 4A State Championship.

Thurlby has coached club with two teams in Los Angeles; Sunshine Volleyball Club in 2011 and Long Beach Mizuno Volleyball Club in 2012.



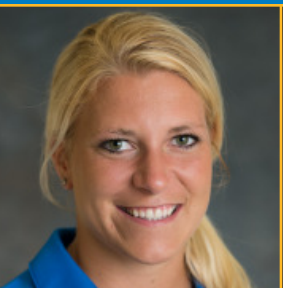
PAMELA SULZICKI
ASSISTANT ATHLETIC TRAINER



SAMANTHA ASARCH
STUDENT ATHLETIC TRAINER



JULIA TANG
STUDENT ATHLETIC TRAINER



ERIN BROCKA
ATHLETIC PERFORMANCE



TONY PERRI
EQUIPMENT MANAGER



JAMES YBIERNAS
SPORTS INFORMATION



VIRGINIA PHAM
TEAM MANAGER



SARAH ZUNO
TEAM MANAGER



LINDA LASSITER
ACADEMIC COUNSELOR



LORI LAMAR
EVENT MANAGEMENT